

STCS Uniform Policy Details 2023-24

Southern Tier Catholic School - Girls Grades K-4

Option 1:

White collared short-sleeve or long-sleeve blouse with Flynn & O'Hara plaid jumper and solid dark colored socks or tights along with optional hunter green button-up sweater over the blouse

Skirt Underclothing- Female students who choose to wear the jumper are encouraged to wear shorts underneath. However, the shorts should not exceed the length of the skirt

OR

Option 2:

Hunter green short sleeve or long sleeve polo shirt, must be tucked in (With or without school logo) with flat front style khaki pants or Bermuda style shorts (no skinny style or carpenter style) and solid, dark colored socks

Green Sweaters or any STCS/Walsh logo sweatshirt may be worn over top of the polo shirts

For both options: Solid black shoes or sneakers (heels cannot be higher than 1 inch, no boots or shoes that go over the ankle)



Southern Tier Catholic School - Girls **Grades 5-8**

Option 1:

Hunter green short sleeve or long-sleeve polo shirt, must be tucked in - with or without school logo with Flynn & O'Hara plaid knee length skirt and solid, dark colored tights or knee length socks

Skirt Underclothing- Female students who choose to wear the skirt, are encouraged to wear shorts underneath. However, the shorts should not exceed the length of the skirt

OR

Option 2:

Hunter green short sleeve or long sleeve polo shirt, must be tucked in (With or without school logo) with flat front style khaki pants or Bermuda style flat front shorts and black belt and solid dark colored socks (skinny or carpenter style khakis are not permitted).

Green Sweaters or any STCS/Walsh logo sweatshirt may be worn over top of the polo shirts

For both options: Solid black shoes or sneakers (heel height may not exceed 1 inch, no boots or shoes that go over the ankle)



Southern Tier Catholic School - Boys **Grades K-8**

Hunter green short sleeve or long sleeve polo shirt, must be tucked in. (With or without school logo)

Green Sweaters or any STCS/Walsh logo sweatshirt may be worn over top of the polo shirts

Class style khaki pants or shorts (no skinny style, cargo, or carpenter style. End of shorts must be within 5" of the knee)

Black belt and solid dark colored socks

Solid black shoes or sneakers, no boots that go over the ankle



Hair

No extreme hairstyles.

Girls can wear school colored headbands (solid yellows, hunter green, white, or navy blue)

No doo rags/bandanas/decorative "ear" headbands.

Boys are not to wear hair accessories of any kind.

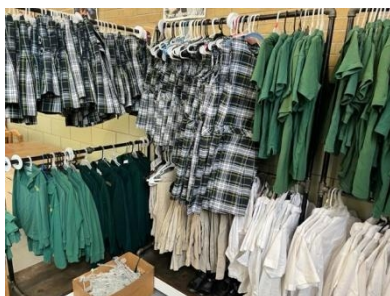
Hair must be well groomed, not hanging over eyes, or unkempt.

Highlighted/dyed hair must be of a natural color.

Cosmetics (7-12 girls only) must be worn modestly and not to any extreme.

Jewelry

Girls are permitted to have small, reasonable earrings.



Uniform Closet Available Now and Free to all STCS Families!

Checks out our inventory, currently located in the gym at our new location

921 North Union, open anytime during the week!